

STRUCTAL

Heavy Steel Construction

New Meadowlands Stadium

Home of the New York Giants and New York Jets
East Rutherford, NJ



A division of Canam Group

New Meadowlands Stadium

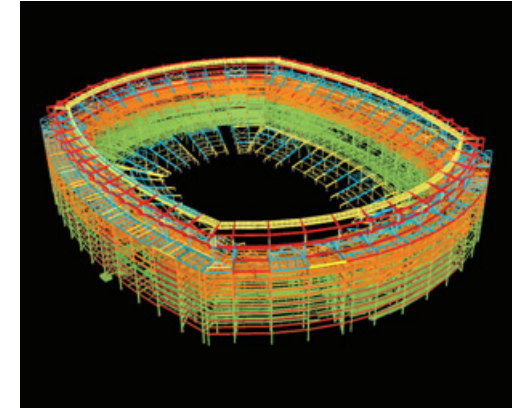
Home of the New York Giants and New York Jets
East Rutherford, NJ

People

- Architectural firm: Ewing Cole
- Engineering firm: Thornton Tomasetti
- Construction manager: Skanska USA

Products and Services

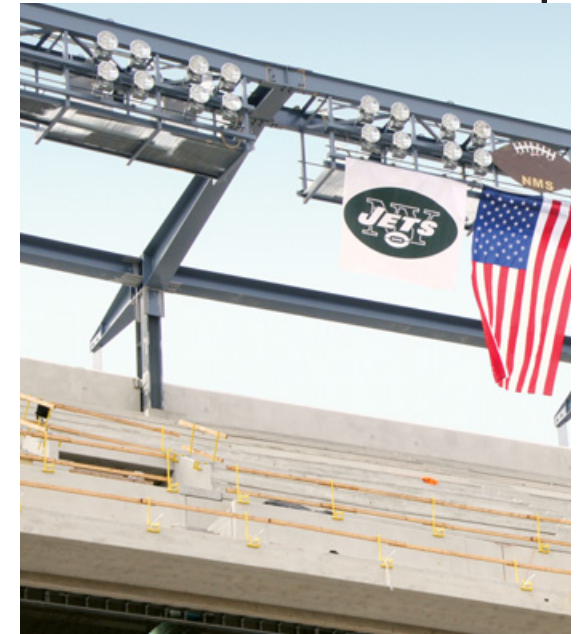
The contract awarded to Structural-Heavy Steel Construction was for the supply and fabrication of 24,000 tons of structural steel and metal deck, including design-assist and detailing services.



Highlights

The 2.2 million-square-foot stadium will hold 82,500 spectators. Structural's design-build approach made it possible for this project to be delivered ahead of schedule and to exceed the customer's expectations.

The 3-D models were shared with Thornton Tomasetti from the design stage of the project, enabling Structural to order the material early and generating savings of up to \$3.5 million.



www.structal.ws